

Foodscape Walkabouts & Urban Songlines.

Visual and Participatory tools for planning of community food programs – case of Health & Local Community and Ellebjerg programs

Bent Egberg Mikkelsen,
professor, Aalborg Universitet

Arkitektskolen 1. September, 2016

Food & placemaking



Place is part of food



Food is part of place

Selecting communities

Variable	Characteristic	Unit	Bornholm Island	Odsherred (Match)	Capital Region
Geophysical	Population	1000	41	32	1.754
	Area. Square km	km ²	588	355	2568
Health status	Overweight, BMI ≥ 25	%	50	53	41
	Diabetes	%	6,5	5,7	4,5
	High blood pressure	%	16	23	22
Health behavior	Citizens with very unhealthy diet behaviors	%	14	16	10
	Citizens with < 30 min/day MVPA behavior	%	36	41	31
	Citizens with self perceived poor health	%	18	21	15
Socio Economic Position (SEP)	Without occupational affiliation	%	26	28	19
	Without higher education (only primary + sec. school)	%	19,1	18	7,6

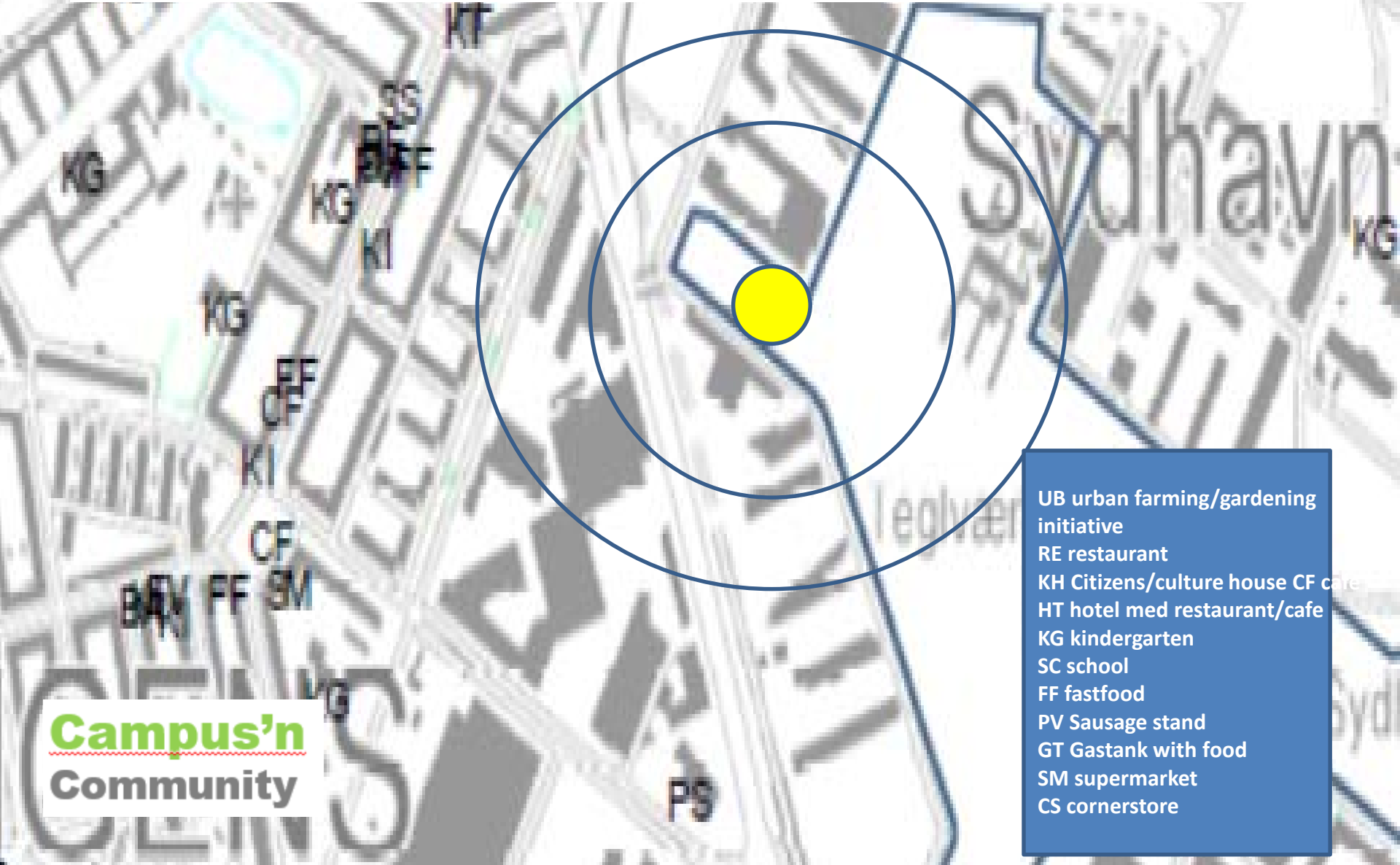
Selecting & engaging communities

How do we assess readiness?



Mapping the FoodScapes

Being a Civic University & practising Service Learning



Images of Sydhavn Activity- & Foodscapes lifelong learning



Photos and GIS mapping: Magnus
Matias Isbrand Høyrup



PhD & Training course:
Urban Spaces
new opportunities for community
action promoting better food & health
August 29-31, 2016
Aalborg University, Copenhagen



Challenges in complex interventions

1. difficulty of standardizing the design
2. delivering the interventions in a way that is sensitive to the features of the local context
3. organizational and logistical difficulty of applying experimental methods to service or policy change
4. length and complexity of the causal chains linking intervention with outcome.



Sjælsø

Sjælsø Boulevard

Ellebjergvej

Stubbøllevvej

Hammelstrupvej

Mozartsvej

Knudsensgade

Borgmester Christiansens Gade

Borgbjergsvej

Scandlegade

Sydhavnsgade

Sydhavnsgade

Socio Economical Position

Sydhavn keyfigures

SOCIOØKONOMISKE NØGLETAL	Outside Labor market	Unemployed	No education	Under education	Low salary
Områdefornyelse Sydhavnen	22,1 %	8,8 %	32 %	18,9 %	40,2%
Det Grønne Sydhavnen	18,5 %	7,5%	28,2 %	19,1 %	44,9%
Sydhavnens Port	28,9 %	11,9%	39,4 %	16,5 %	37,9%
Tegl- og Sluseholmene	9,6 %	2,9 %	15,8 %	13,7 %	21,7 %
København gennemsnit	17,1 %	5,9 %	21,3 %	22,7 %	30,6 %

Places of interest PoI

- Places
- Hot spots
- Action possibilities
- Affordance locations
- Touch points

Features of a place

- Meaningfull
- Functional
- Activity enhancing
- Owned by somebody
- Can be shared

Stakeholders

- Municipality
- Urban renewal
- Local activists
- Community leaders
- Parents/school boards
- Senior groups
- Researchers
- Foundations

Steps

Discover and map the action possibilities

- Performing the PLU stakeholder analysis.
- Foodscape walkabout – exploring the food environment.
- The path between the hot spot = songline.
- Identifying hot spots*.
- Capturing action possibilities using
 - Visuals
 - Narratives
- GeoMapping the hot spots.



*Places of Interest (PoI)

Choosing intervention sites

Stakeholder identification PLU approach (Readiness)

Stakeholder	Power	Legitimacy	Urgency
Municipality			
School Head teacher			
Local Media			
Shoop keepers association			
Local NGO's			

Low	Low-medium	Medium	Medium-high	High
1	2	3	4	5

1st iteration

Identifying community support

	A-part				B-part			
Describe the type of stakeholders (E.g. community leaders)	Power	Legitimacy	Urgency	Total score (P*L*U) “The importance of that stakeholder”	Success criteria (“What is in it for me”)	Adoption of innovation (Early mover, laggard etc.)	Actions that might get the stakeholder what he wants	Resources needed for such actions (money, time, knowledge)

2nd iteration

mapping actions opportunities

Teglborg et al 2014

Mapping the Ellebjerg school garden



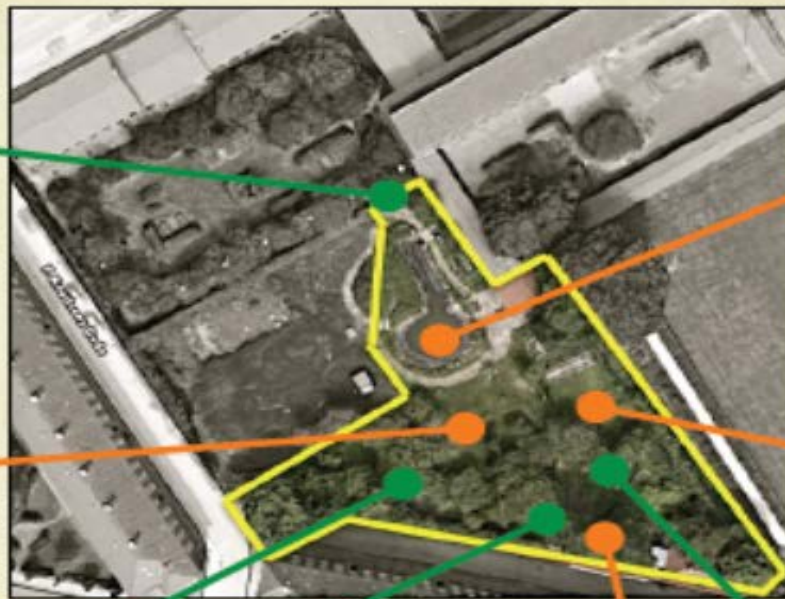
No access



Unsafe



Playground



Pain



Mess



Risk of drowning



Social interaction



Hiding place

The janitor's story

The janitor thinks the garden is great, but there is not always time to maintenance, because other jobs around the school often have a higher priority than the garden. He used to play and grow things in the garden when he was a child.

"The children love to be in the garden"

"They sometimes use the garden for projects, like the windmills they made in a science project"



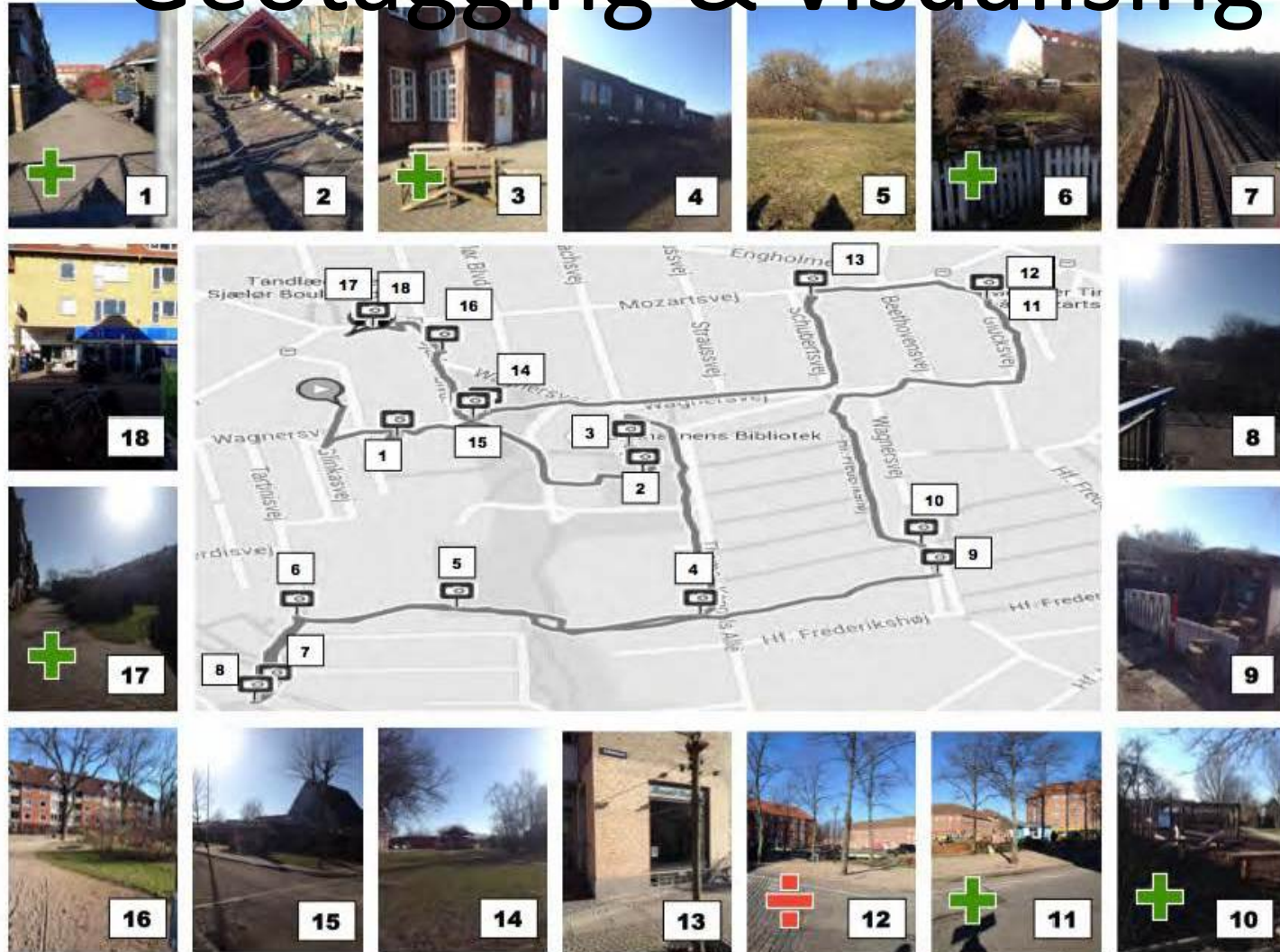
"The garden is divided between the children and the elderly"

"Sometimes the garden grow out of control, and the stinging nettles grow larger than the children"

3rd iteration

Geotagging & visualising

The following illustration is created on the basis of the walkabout with end-user-2.



Bundgård, L & Jørgensen, NK: The further development of a foodscape approach based method for assessing action and intervention opportunities in a local community food environment.

Source: own creation.

Illustration 2: Walkabout route with pictures end-user-2.

The illustration shows the walkabout route with the chronological order of the pictures taken during the walk and the end-user's prioritisation of these, both positive and negative.



4th iteration adding narratives

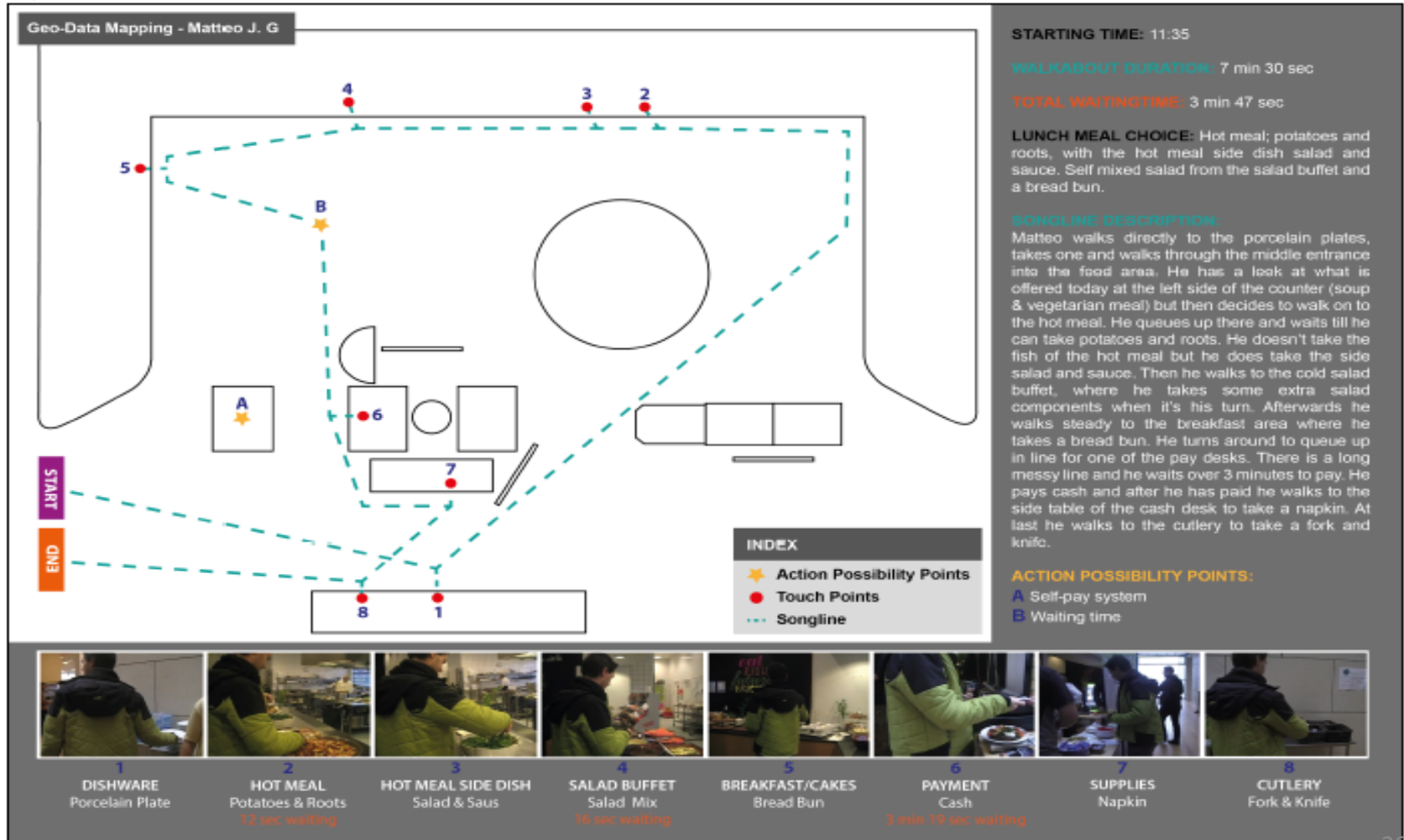


Figure 7: Geo-Data Mapping Matteo J. G.

Choosing intervention components score card

Intervention component	Price	Strength of evidence base	Acceptability as assessed by mediators, How meaningful it is to the mediators	Acceptability as assessed by target group How meaningful it is to the end users/target group	Infrastructures or activities already present	Total score

Low	Low-medium	Medium	Medium-high	High
1	2	3	4	5

Garden became the place

Vision: an intergenerational green hotspot



Community Program Development

ten steps

- Sketch a protocol
- Identify stakeholders
- Assess their readiness
- Map what's already there
- Map needs & expectations
- Identify action opportunities
- Draw on the evidence base
- Create alliances
- Choose intervention components
- Re-engineer your protocol

What to do, with who & where

- Best theoretical foundation
- Strongest evidence base
- Most engaged mediators
- Most changeable environments
- Best affordances
- Most things to improve
- Ongoing activities

Thanks for your attention

bemi@dcm.aau.dk, 25 38 43 66

- Personal web site: <http://personprofil.aau.dk/119690?lang=en>
- Linked in: <http://dk.linkedin.com/pub/bent-egberg-mikkelsen/7/713/13b>
- ResearchGate: http://www.researchgate.net/profile/Bent_Mikkelsen
- Instagram: [@bentegberg](#)
- Web: capfoods.aau.dk
- Publons: <https://publons.com/author/559299/bent-egberg-mikkelsen#profile>

Thanks to the people of Bornholm & Sydhavn

the Sol team

Charlotte Glumer

Ulla Toft

Lise L Winkler

Tine Buch Andersen

Bjarne Bruun Jensen

Paul Bloch

Helene C. Reinbach

The Sydhavn Campus'n Community co-workers. Nethe K Jørgensen, Line Bundsgård, Anna Pries, Lovisa Pettersson, Milou van Empel,



URBAN ALLOTMENT GARDENS

HOME / FINAL CONFERENCE

FINAL CONFERENCE

Introduction

GROWING IN CITIES - INTERDISCIPLINARY PERSPECTIVE

11:15

Session A3

room 115 FHNW

Community gardens as spaces for knowledge, learning & action

School gardens in Denmark – organization and effects of the Gardens for Bellies school garden program, Pernille Malberg Dyg

Seeding social capital? Community gardening and social capital, Søren Christensen, Tania Aese Dræbel

Activity enhancing urban spaces – new green potentials for local action, Bent Egberg Mikkelsen

Agronomical and collective knowledge: comparative analysis of two urban gardens in Greece, Vasiliki Giatsidou, Maria Partalidou

Chairs: Bent Egberg Mikkelsen, Pernille Malberg Dyg



GROWING IN CITIES



BASEL 2016

10th INTERNATIONAL CONFERENCE ON culinary arts AND sciences

Aalborg University and Metropolitan University College are proud to welcome you to the 10th International Conference on Culinary Arts & Sciences in Copenhagen. It takes place July 6-7th in Central Copenhagen, with pre-conferences on July 5. The conference theme is Future Foodscapes and 6 important themes will be covered:

- Food service and hospitality
- Food heritages and authenticity
- Big food data and small devices
- Urban food systems and sustainable diets
- Gastrosophy and culinary sciences
- Food choice and dynamic consumption

We invite you to submit your best work and are looking forward to see you in Copenhagen.



- STAY UPDATED >
- CONFERENCE THEMES >
- SCIENTIFIC COMMITTEE >
- IMPORTANT DATES >
- VENUE >
- ABSTRACT SUBMISSION >

Powered by

METROPOLITAN
UNIVERSITY COLLEGE

METROPOL



AALBORG UNIVERSITY
DENMARK

Captive Foodscape
Studies Group