

Building a research infrastructure for Food, Nutrition and Health Research (FNH-RI) in Europe

Trond Selnes and Karin Zimmermann, on behalf of EuroDISH, DISH-RI and RICHFIELDS consortia

Nordic & Baltic 2018 Food & Nutrition Initiative, Workshop Latvia

Trond Selnes & Karin Zimmermann

- Trond Selnes, MA, MBA, dissertation in prep, WUR
 - Wageningen Economic Research, Researcher Governance
 - RI-involvement: Richfields; Smart Food Intake; FNH-RI Prospect
- Karin Zimmermann, BSc, RM, WUR,
 - Wageningen Economic Research, Research leader Research Infrastructure Food & Health at WUR,
 - Coordinator of EuroDISH and RICHFIELDS,
 - Vice-chair of the EMB board of European Food, Nutrition and Health Research Infrastructure

Both: involved in the FNH-RI Dutch national node DISH.nl

Societal trends

Digitalisation <ul style="list-style-type: none"> Data platforms, linked open data, standards Apps, sensors, wearables 	Integration <ul style="list-style-type: none"> Fragmentation in sectoral policies and practices to be overcome
Personalisation <ul style="list-style-type: none"> Individual feed back structures Quantified self 	Citizen science <ul style="list-style-type: none"> Citizens become engaged in research
Globalisation <ul style="list-style-type: none"> Global markets and global SDGs Internet 	Consumers & Data

Research Infrastructures: overcome fragmentation

Fragmented
Disciplinary
Sectoral
Ineffective
Inefficient

Transition to
Consumer centred

FNH-RI
Inter-disciplinary
Multilevel
Multisectoral

Societal challenges (Food 2030)

Open Innovation	Investment; Regional; Private partnering
Open Science	Open access and data sharing; engagement, education, skills
Research Breakthroughs	"Smart" FNS via ICT; Food system science and trans disciplinarity
Open to the World	Global collaboration; MS policy alignment and support

Data: BIG data, integration, standards Science: Reversed paradigm

Policy & societal

Scientific theories

Research activities

High throughput and internet

Decisions

Knowledge

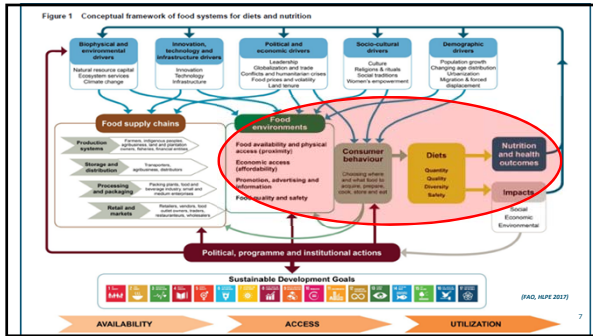
Information validity

Data and variables

Big data
-omics, GIS, internet, apps, sensors

Data analysis, interpretation & integration

Technological innovation



Food Nutrition and Health RI

- To enable **top-level research**, breakthroughs and innovations that promote personal, public and planetary health, in innovative and inclusive communities.
- To serve the pan-European research community to **overcome fragmentation** to collate, connect and share innovative and existing research data, tools and labs & experimental facilities.

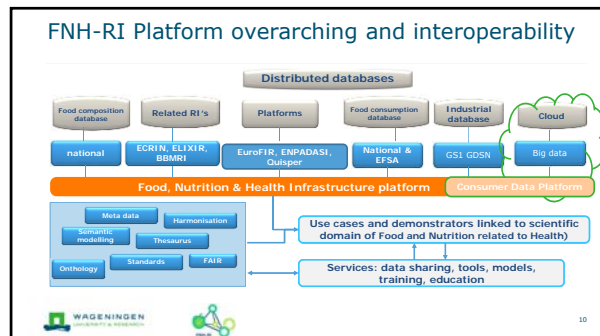
unpins the design of our plate of the future

WAGENINGEN UNIVERSITY & RESEARCH

FNH-RI model

- Data platform:** added value by scientific integration of fragmented and locked data via services to stakeholders
- ICT backbone:** supporting the interoperability of standardization and quality management of data and tools
- Governance structure:** conditions for access, organizes centralized and distributed activities, and enables flexibility regarding innovation within the RI

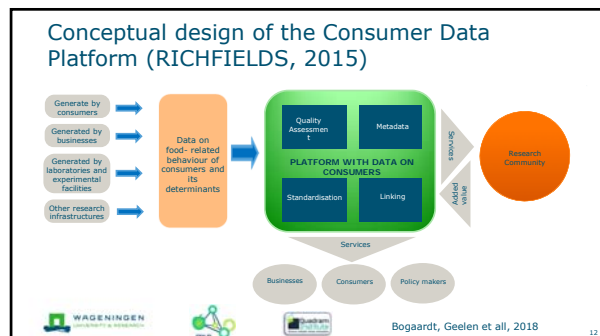
WAGENINGEN UNIVERSITY & RESEARCH

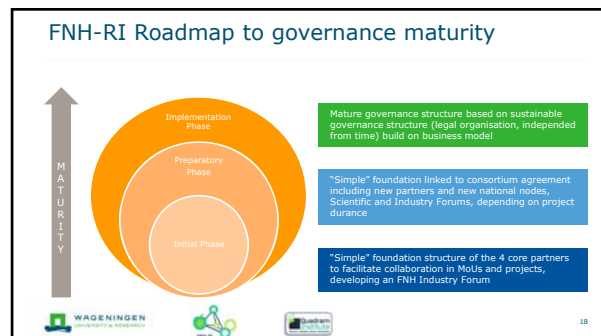
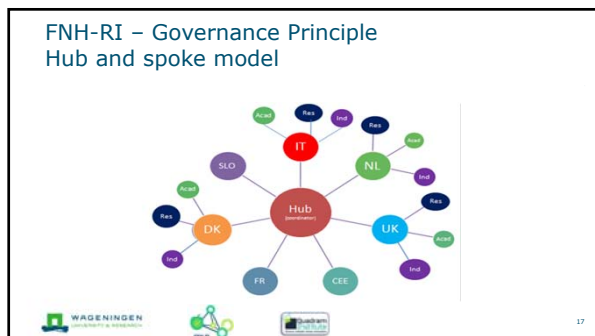
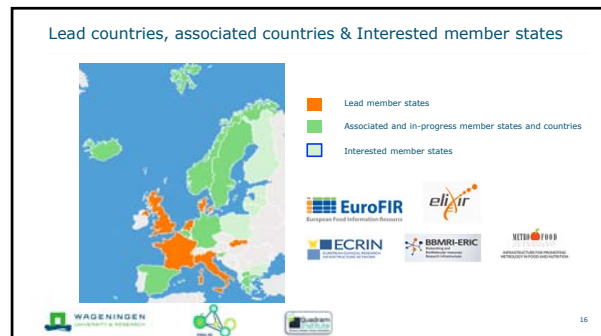
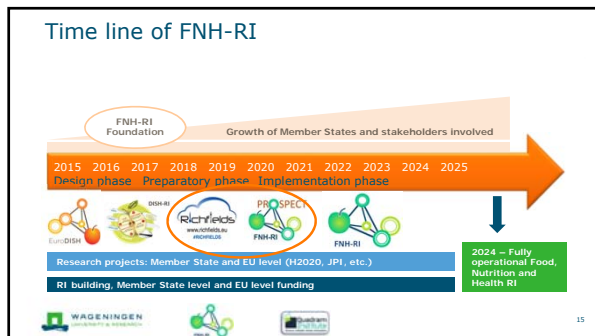
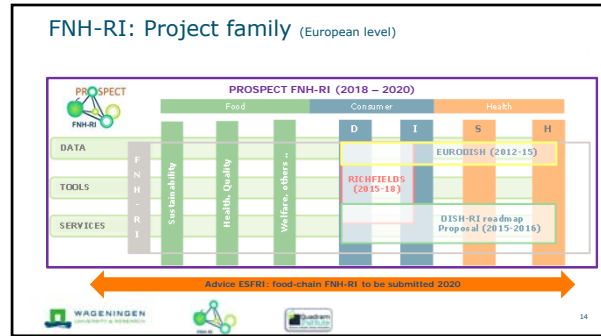
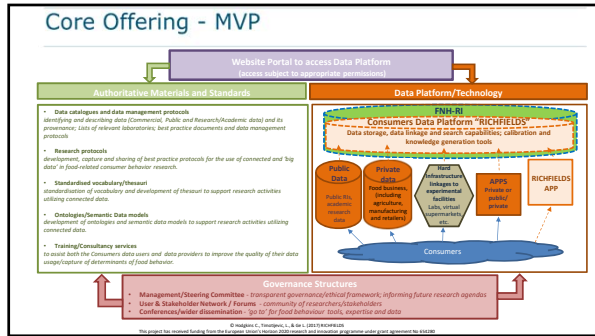


Data of the future - Big data on consumers

Increase understanding in monitoring the differences

WAGENINGEN UNIVERSITY & RESEARCH





Development of a FNH National Node Step by Step – Establish a platform

Step 1: Find a lead institute/university and spokes man/women with endurance!

Step 2: Introduction workshop with broad invitations in the domain of food systems, consumer research, nutrition, preventive health (system)

Step 3: Find a joint interest in research and elaborate on it in terms of platform science case and RI

Step 5: Get acknowledgement by the relevant Ministry from perspective of the FNH-RI Science Case.

19

Development of a FNH National Node Step by Step – National ESFRI ROADMAP

Step 6: Get acquainted with your national ESFRI representative.

Step 7: Apply with the national platform to the National ESFRI Roadmap to be listed and acknowledge in terms of National Node of FNH-RI

If on the next National Roadmap:

Step 8: Apply for funding for your national proposal to align FNH-RI and FNH National Node initiatives

Step 9: Transfer the budget into a workplan for the platform members

20

Development of a FNH National Node Step by Step – European FNH-RI

Step 10: Leading institute represent the FNH National Node in General Board of FNH-RI

Step 11: FNH-RI Board will apply for the ESFRI ROADMAP 2020 and start writing in April 2018 as a consortium PROSPECT FNH-RI

Step 12: On behalf of FNH community and FNH Board The Netherlands will submit the proposal to ESFRI in March 2019

Step 13: December 2019: Decision about the ESFRI ROADMAP 2020 and FNH-RI. May 2020: ESFRI 2020 Roadmap will be launched.

21

On behalf of all partners of the FNH-RI consortium and its partners from EuroDISH, DISH-RI and RICHFIELDS:

THANK YOU FOR YOUR ATTENTION

FNH-RI will unpin the design of our plate of the future

22

